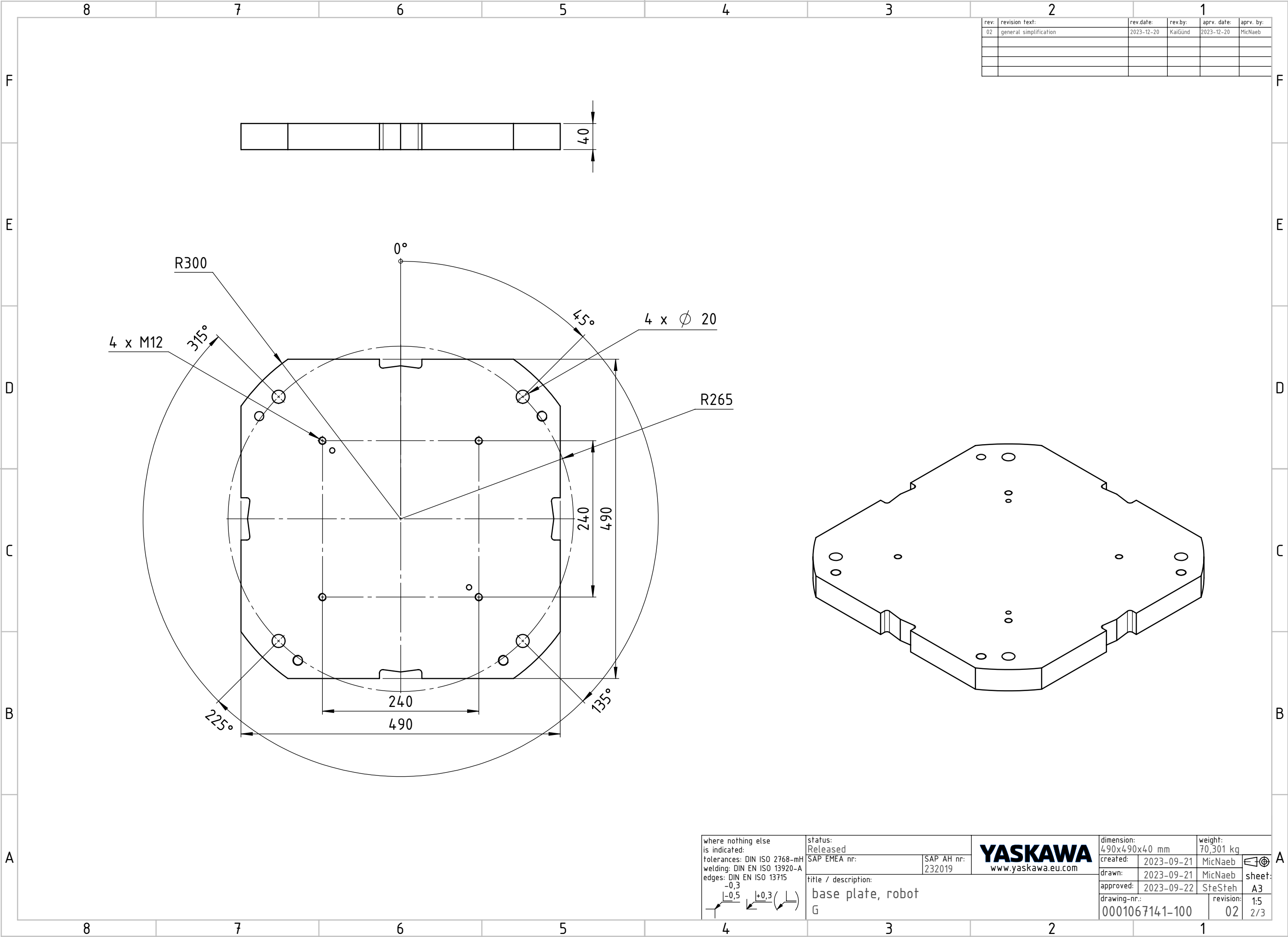





C:\2023-drawing\filename_1001067141-100_version_02_31_last_saved_23.01.2024_kl.03.45 // CAD-3D-model filename_000067141-100_version_02_31_last_saved_23.01.2024_kl.03.45 // drawing frame date: 2023-05-17

CONFIDENTIAL! The reproduction, distribution and utilization of this document as well as the communication of its contents to others without express authorization is prohibited. Offenders will be held liable for the payment of damages. All rights reserved in the event of the grant of a patent, utility model or design



2		1			
rev.	revision text:	rev.date:	rev.by:	aprv. date:	aprv. by:
02	general simplification	2023-12-20	KaiGünd	2023-12-20	MicNaeb

where nothing else is indicated: tolerances: DIN ISO 2768-mH welding: DIN EN ISO 13920-A edges: DIN EN ISO 13715 <div></div>	status: Released		<div> www.yaskawa.eu.com</div>	dimension: 490x490x40 mm	weight: 70,301 kg	<div></div>			
	SAP EMEA nr:	SAP AH nr: 232019		created:	2023-09-21		MicNaeb	sheet:	
	title / description: base plate, robot G			drawn:	2023-09-21		MicNaeb		
				approved:	2023-09-22		SteSteh	A3	
				drawing-nr.:	0001067141-100		revision:	1:5	
							02	2/3	