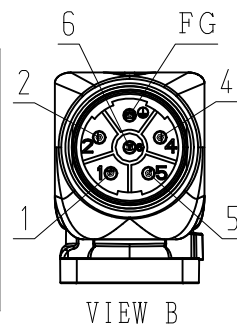


DWG. NO. 900-180-728

RoHS **CE**

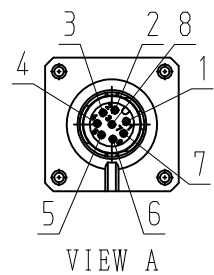
MOTOR TERMINAL CONNECTION

1	PHASE V
2	-
4	-
5	PHASE U
6	PHASE W
FG	FRAME GROUND
CON. CASE	FRAME GROUND



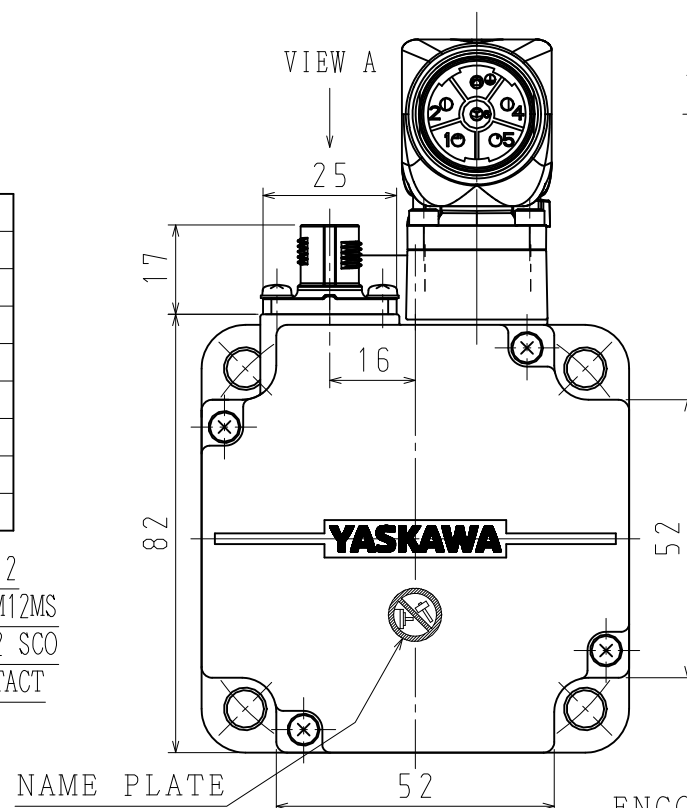
RECEPTACLE SIZE:M23
HOUSING:SF-5EP1N8AAD00S
MAKER:PHOENIX CONTACT

ENCODER TERMINAL CONNECTION

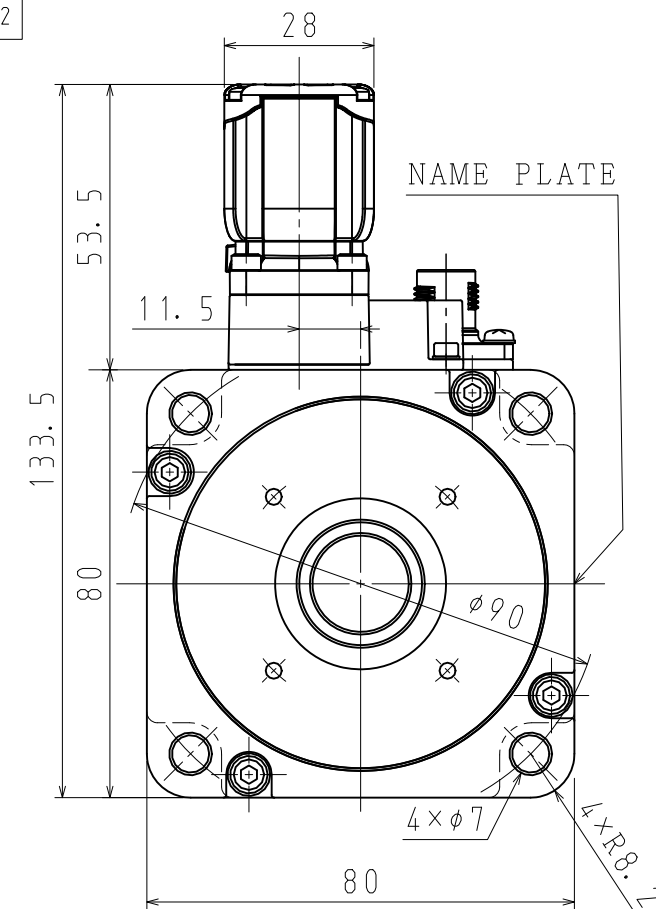
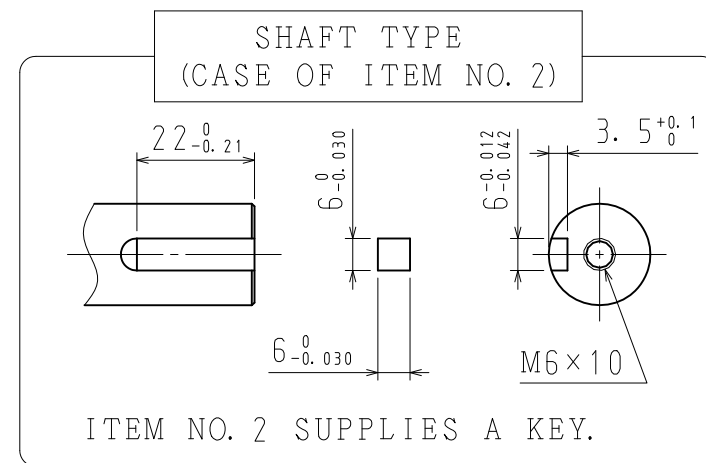
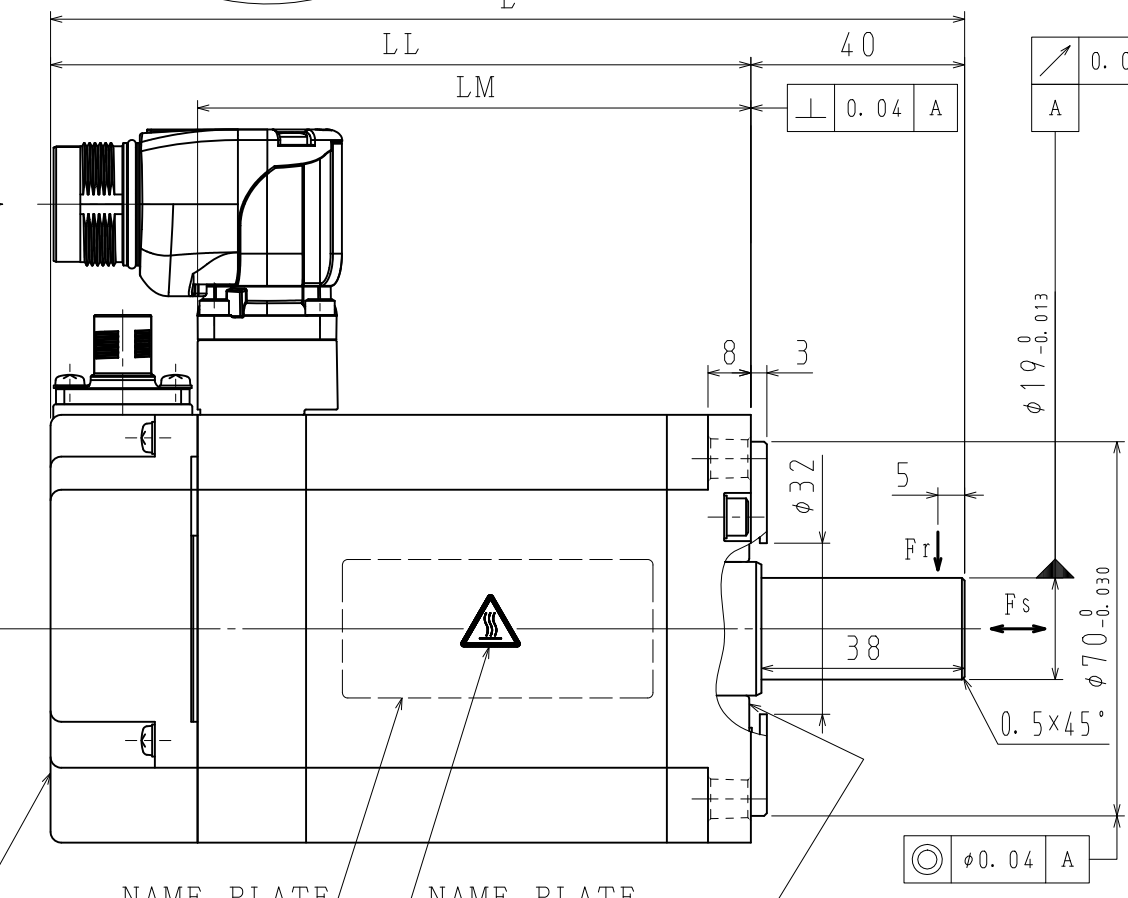
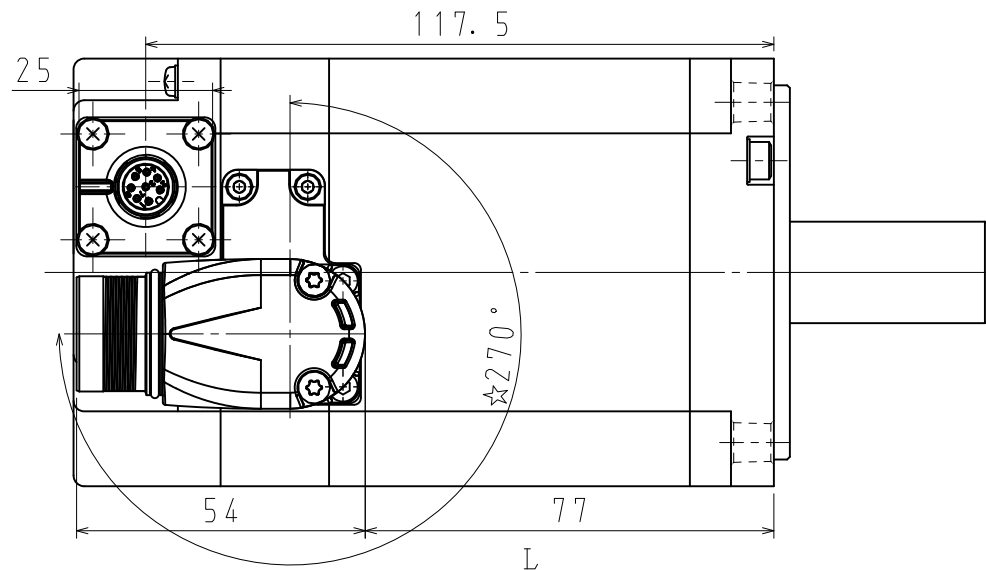


1	PG5V
2	PG0V
3	FRAME GROUND
4	BAT (+)
5	BAT (-)
6	DATA (+)
7	DATA (-)
8	-
CON. CASE	FRAME GROUND

RECEPTACLE SIZE:M12
HOUSING:SACC-MSQ-M12MS
-25-3,2 SCO
MAKER:PHOENIX CONTACT



VIEW B



NOTES

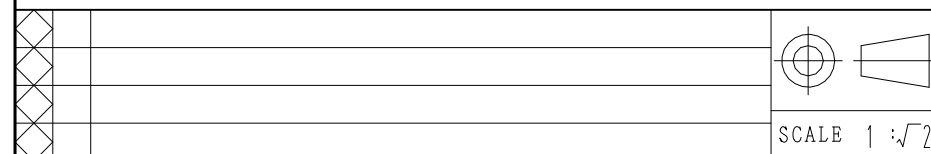
- ALL DIMENSIONS ARE IN MILLIMETERS.
- MOTOR SPECIFICATIONS :900-172-604
- ENCODER SPECIFICATIONS:900-172-501 (24BIT ABSOLUTE)
- VIBRATION:15μm OR BELOW AT RATED SPEED.
- MOTOR CABLE AND ENCODER CABLE ARE OPTIONAL.
- READ AND UNDERSTAND DOCUMENT PACKED WITH MOTOR (SAFETY PRECAUTIONS), AND BE CAREFUL USING MOTOR.
- DEGREES OF PROTECTION:IP67 EXCEPT FOR SHAFT OPENING. MUST USE SPECIFIED CONNECTORS FOR MOTOR.
- AT THE TIME OF DELIVERY OF MOTOR, EACH OF CONNECTORS ARE ATTACHED PROTECTIVE PARTS. PLEASE REMOVE THEM BEFORE ATTACHING CABLES.

- DO NOT TOUCH EACH OF CONNECTOR PINS DIRECTLY. IT CAUSES FAILURE.
- MOTOR CONNECTOR COULD BE TURNED IN THE RANGE OF ☆ WITHIN 10 TIMES.

DO NOT USE AS FIXATION OF LOAD.

ITEM NO.	TYPE	SHAFT TYPE	L (mm)	LL (mm)	LM (mm)	RATED OUTPUT (W)	RATED TORQUE (N·m)	TIME RATING	RATED SPEED (min ⁻¹)	VOLTAGE (Vrms)	RATED CURRENT (Arms)	THERMAL CLASS	WEIGHT (kg)	ALLWABLE RADIAL LOAD Fr (N)	ALLWABLE THRUST LOAD Fs (N)
1	SGM7A-10D7F21	STRAIGHT	171	131	103.5	1000	3.18	CONT.	3000	400 (3PHASE)	3.2	B	3.2	392	147
2	SGM7A-10D7F61	KEY+TAP													

F



YASKAWA

DRWN.	S. KAMIJO
CHKD.	T. HIROSE
APRV.	K. AOKI

TITLE AC SERVOMOTOR Σ-7 SERIES
SGM7A MODEL 1000W

DRWN. DATE	JUN. 06, '15	REV.	
DWG. NO.	900-180-728		

SIZE A3